

Inserta® Products, Inc.

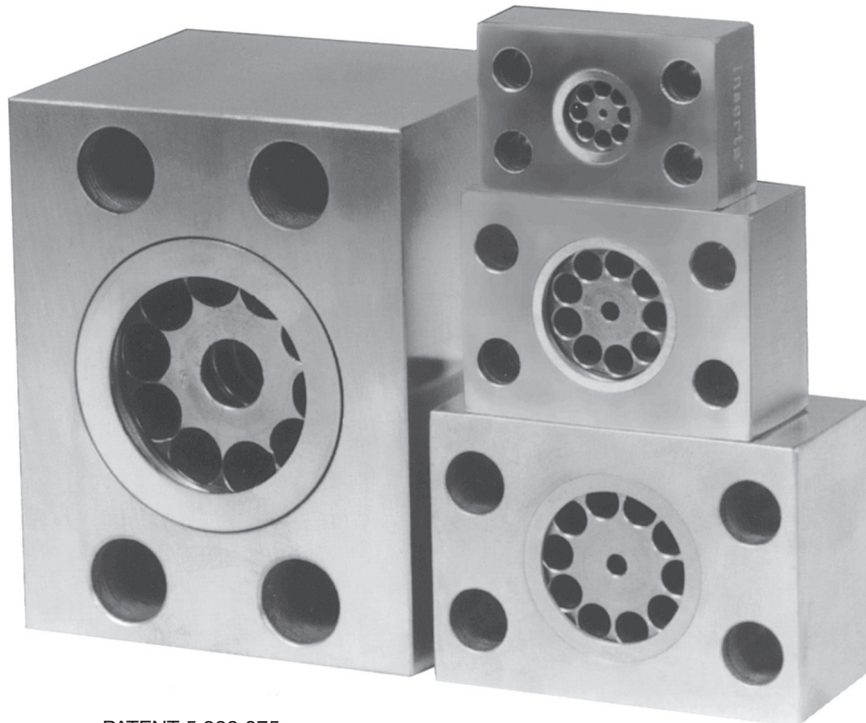
CHECK VALVES 4-BOLT FLANGE TYPE

INSERTA® ICFT Check Valves, Flange Type, provide an effective way to install a Check Valve or Fixed Orifice Flow Control Valve in a piping system that uses SAE 4-Bolt flange ports. These flange bodies include the INSERTA® ICT Thread-In Type Check Valves, with the option to include an INSERTA® IGT Guided Disc, Thread-In Type Check Valve on select sizes. The free flow direction is always from the surface with the seal to the surface without the seal. The nominal size INSERTA® ICT Thread-In Type or INSERTA® IGT Guided Disc, Thread-In Type Check Valve, matches the nominal flange size to meet most flow requirements for the given flange size. The ICFT Check Valves, Flange Type, 6132 and 6232 are also available with -24 size Check Valves for those applications that do not require the flow capacity of the -32 size.

For those applications where one requires the free flow from the plain surface to the surface with the seal, the INSERTA® ICF Check Valve Body or INSERTA® ICFS Check Valve Body with Sup-port Member, Flange type, should be used with the INSERTA® ICS Check Valve, Slip-In Type. The INSERTA® ICS Check Valve, Slip-In Type, can be inserted from either end to permit free flow through the body in either direction. The ICF bodies use a larger nominal size INSERTA® ICS Check Valve, and is the check valve of choice in higher flow applications.

The INSERTA® IGT Guided Disc Thread-In Type Check Valve may be considered for in demanding applications that may subject the valve to considerable turbulence or higher cycling.

INSERTA® ICFT Check Valves, Flange Type, are all steel construction.



PATENT 5,338,075

ORDERING INFORMATION

ICFT - A - 61 - 32 - (24) - N - 015 - ** - RØ - GT

INSERTA®
CHECK VALVE
FLANGE TYPE
(w/ICT CHECK)

DESIGN CODE

MOUNTING PATTERN

61 = SAE CODE 61
62 = SAE CODE 62

NOMINAL SIZE

08 = 1/2 24* = 1-1/2
12 = 3/4 32* = 2
16* = 1 40 = 2 1/2
20* = 1 1/4 48 = 3

(USED WHEN ICT
CHECK SIZE IS
SMALLER THAN THE
NOMINAL SIZE)
OMIT WHEN THE SAME

(OMIT FOR ICT INSERT)
GT = IGT THREAD-IN TYPE
CHECK VALVE

FLOW CONTROL OPTION

R = FIXED RESTRICTIVE ORIFICE
Ø = DIAMETER (INCH) OF THE FIXED
ORIFICE. CUSTOMER MUST SPECIFY
THE ORIFICE DIAMETER.
SEE "RØ" ON DATA SHEET FOR
ORIFICE DATA.

PLATING

** = NONE
ZN = ZINC NICKEL

CRACKING PRESSURE

003 = 3 PSI
007 = 7 PSI
015 = 15 PSI (STANDARD)
030 = 30 PSI

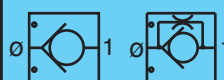
SEAL COMPOUND

N = BUNA-N (STANDARD)
V = VITON

*IGT Guided Disc Valve element available

Inserta Products, Inc.
Blue Bell, Pa. 19422

CHECK VALVE
4-BOLT
FLANGE TYPE

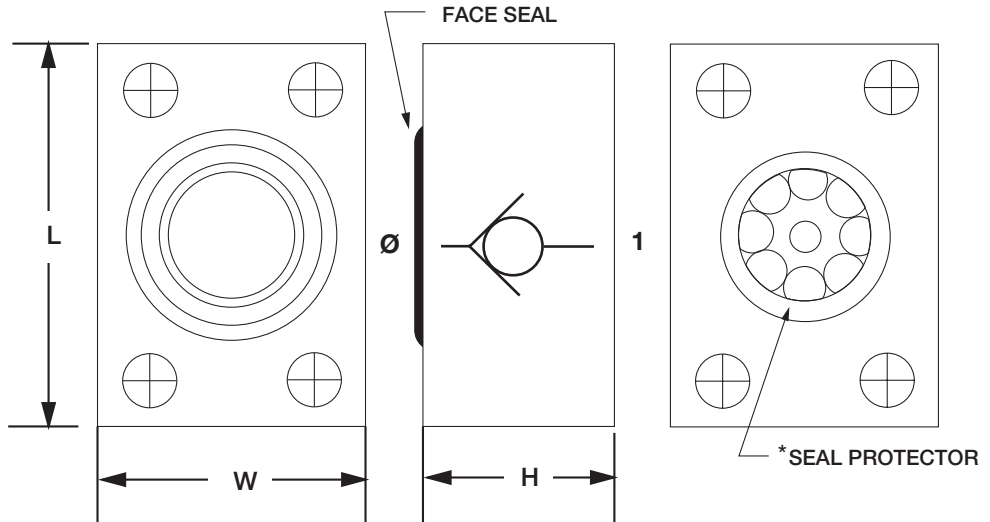


*Seal Protector must be retained by the mating standard SAE Face Seal groove's inner support area.

A flange head should not be affixed directly to surface 1 of the valve. A planar element, such as an INSERTA® IPS Port Spacer must be used between Face 1 of the valve and a flange head.

**See Page 17 for Flow Control Option Orifice data.

CAUTION - Care must be exercised when installing check valve to insure the free flow path is correct for the system in which it is installed.



CODE 61

MOUNTING PATTERN-SIZE	NOMINAL SIZE	NOM. FLOW RATE (GPM)	W	H	L	O-RING SIZE NO.	ICT THREAD-IN CHECK VALVE PART NO.	IGT THREAD-IN CHECK VALVE PART NO.
6108	1/2	12	1.37	1.00	2.12	210	ICT-B-08-***	--
6112	3/4	25	1.75	1.25	2.50	214	ICT-B-12-***	--
6116	1	35	2.00	1.50	2.75	219	ICT-B-16-***	IGT-A-16-***
6120	1 1/4	63	2.25	2.00	3.00	222	ICT-B-20-***	IGT-A-20-***
6124	1 1/2	80	2.75	2.25	3.75	225	ICT-B-24-***	IGT-A-24-***
6132 (24)	2	80	3.00	2.00	4.00	228	ICT-B-24-***	IGT-A-24-***
6132	2	135	3.25	3.50	4.00	228	ICT-B-32-***	IGT-A-32-***
6140	2 1/2	155	3.50	3.75	4.50	232	ICT-B-40-***	--
6148	3	175	4.00	4.00	5.00	237	ICT-B-48-***	--

CODE 62

MOUNTING PATTERN-SIZE	NOMINAL SIZE	NOM. FLOW RATE (GPM)	W	H	L	O-RING SIZE NO.	ICT THREAD-IN CHECK VALVE PART NO.	IGT THREAD-IN CHECK VALVE PART NO.
6208	1/2	12	1.50	1.00	2.25	210	ICT-B-08-***	--
6212	3/4	25	1.87	1.25	2.75	214	ICT-B-12-***	--
6216	1	35	2.25	1.50	3.00	219	ICT-B-16-***	IGT-A-16-***
6220	1 1/4	63	2.50	2.00	3.50	222	ICT-B-20-***	IGT-A-20-***
6224	1 1/2	80	3.00	2.25	4.25	225	ICT-B-24-***	IGT-A-24-***
6232 (24)	2	80	3.50	2.00	5.00	228	ICT-B-24-***	IGT-A-24-***
6232	2	135	4.00	3.50	5.00	228	ICT-B-32-***	IGT-A-32-***
6240	2 1/2	155	4.25	4.00	6.00	232	ICT-B-40-***	--
6248	3	175	5.00	4.00	8.00	237	ICT-B-48-***	--

REFERENCE DATA

NOMINAL FLOW RATINGS ARE WITH A Δ P OF 30 TO 40 PSI. In applications where the valve is subject to sudden shock opening or closing (e.g. Accumulator System), the nominal rated flow must not be exceeded and a minimum cracking pressure of 15 PSI is required. THE PRESSURE RATING OF THESE VALVE ASSEMBLIES MAY BE LIMITED BY THE ICT CHECK INSERT. REFER TO THE ICT DATA SHEET.

TEMPERATURE RANGE: -22 F (-30 C) TO 175 F (80 C)
 OPERATING MEDIUM: HYDRAULIC FLUID
 VISCOSITY RANGE: 50 SSU TO 2000 SSU
 CRACKING PRESSURE: 3 PSI, 7 PSI, 15 PSI (STANDARD) & 30 PSI.

<p>Inserta Products, Inc. Blue Bell, Pa. 19422</p>	<p>CHECK VALVE 4-BOLT FLANGE TYPE</p>	
---	--	--