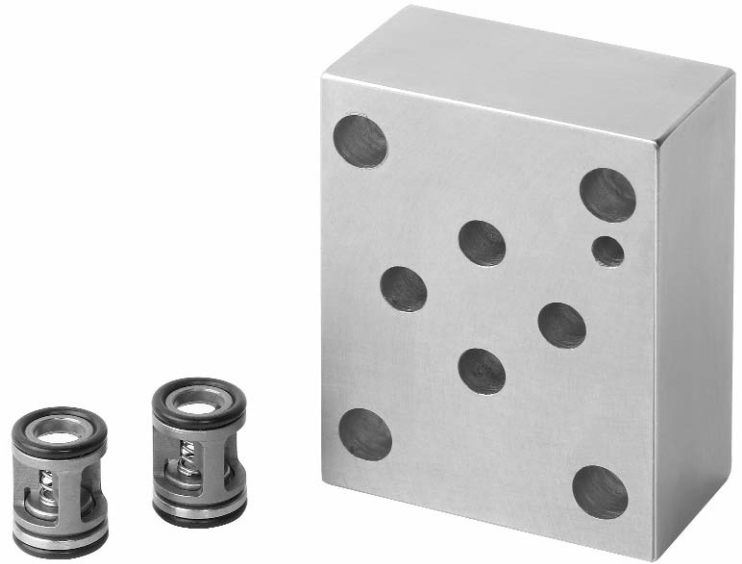


Inserta Products, Inc.

D03 CHECK VALVE MODULES

INSERTA® ICD D03 Check Valve Modules are a compact means to provide check and fixed orifice flow control in a D03 stack assembly. Each module may be ordered with either one or two INSERTA® ICS Check Valves, Slip-in type. The INSERTA® ICS Check Valves, Slip-in type, can be installed with the free flow in either direction. Steel construction allows operating pressures up to 5000 psi. In-line flow paths through the valve inserts minimize any additional pressure drops and wasted horsepower.



ORDERING INFORMATION

ICD - A - D03 - 04 - XXCC - S - N - 015 R.030 - 015 R.040

INSERTA®
DIRECTIONAL
MODULE
CHECK TYPE

DESIGN CODE

NFPA PATTERN

VALVE SIZE

POSITIONAL INFORMATION

P-T-B-A
C-CHECK PRESENT
X-NO CHECK PRESENT

SECOND VALVE ORIFICE
SIZE (INCHES)
(IF ORIFICE NOT
REQUIRED R.000)
(OMIT IF VALVE NOT
REQUIRED)

SECOND VALVE
CRACKING PRESSURE
(OMIT IF VALVE NOT
REQUIRED)

FIRST VALVE ORIFICE SIZE (INCHES)
(IF ORIFICE NOT REQUIRED R.000)

FIRST VALVE
CRACKING PRESSURE

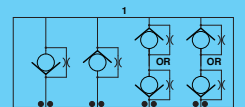
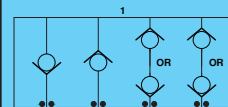
SEAL
MATERIAL

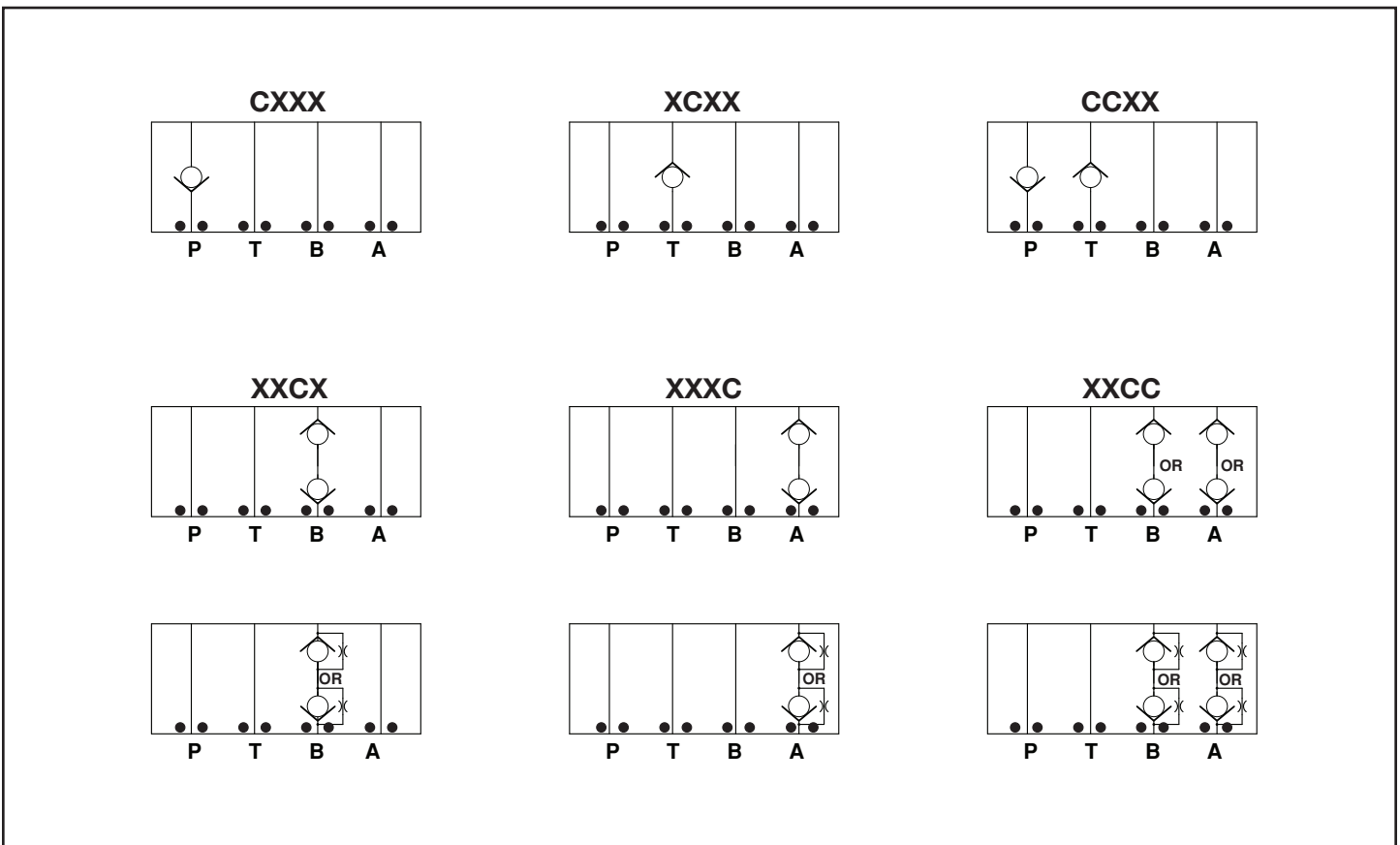
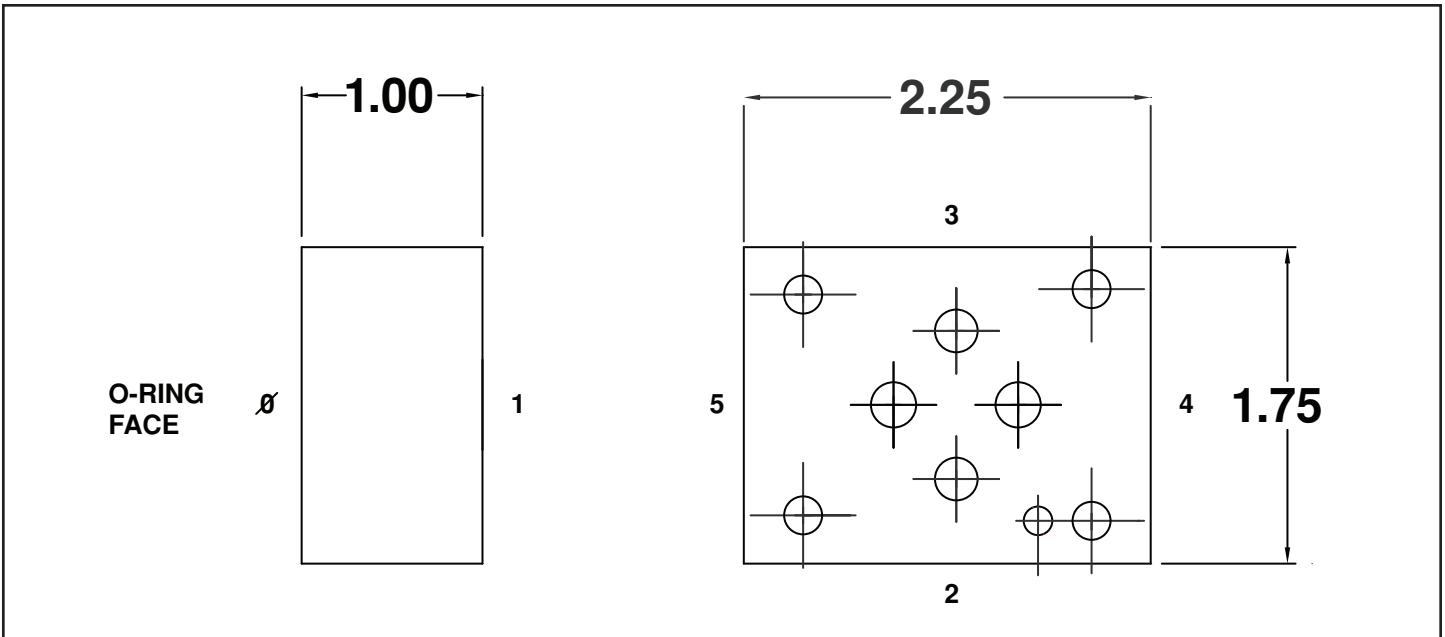
N-BUNA N
V-VITON

BODY MATERIAL
S-STEEL

Inserta Products, Inc.
Blue Bell, Pa. 19422

D03 CHECK VALVE
MODULES





Inserta Products, Inc.
Blue Bell, Pa. 19422

**D03 CHECK VALVE
MODULES**

