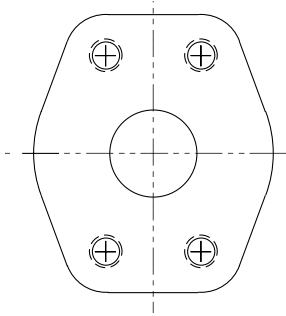


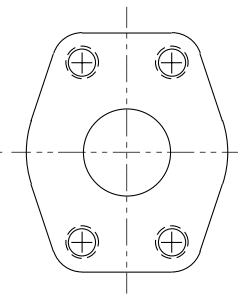
ADACONN® INSERTA®

ADACONN® + INSERTA® have introduced various innovative products for 4 & 2-Bolt Flange Ports that are trend setting in reducing the size of standard and high pressure fluid systems. The following illustrates this trend toward smaller flange ports and their corresponding flange connections.

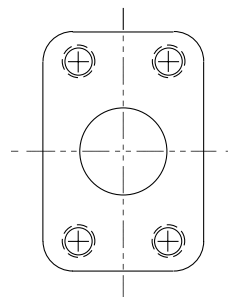
FLANGE PORTS



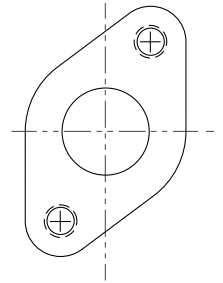
CODE 62 4-BOLT



CODE 61 4-BOLT



UNIFIED
CODE U61 4-BOLT



UNIFIED
CODE U61 2-BOLT

The **CODE 61 4-Bolt** (Standard Pressure Series) and the **CODE 62 4-Bolt** (High Pressure Series –6000 PSI) Flange Ports are recommended for hydraulic flanged tube, pipe and hose connections, 4-Bolt Split Flange type per SAE Standard J518 JUN93. A reference to these dimensions is listed on page 53.

ADACONN® offers the patented **ADAFLANGE™ ADAPTERS** with flange heads and one-piece flanges that are used to connect to both the **CODE 61** and **CODE 62 4-Bolt** Flange ports. The internal hexagon drive in the flange head end, allows for center drive wrenching and minimizes the length of the adapter. The patented **ADAFLANGEPORT™ ADAPTERS** with the center drive wrenching are great for converting a threaded port to a companion flange port in a minimum of space. **INSERTA®** offers **CODE 61 and CODE 62 4-Bolt Modular Connectors**.

The **ADACONN® + INSERTA® UNIFIED CODE U61 4-Bolt Flange Ports** are recommended for hydraulic flanged tube, pipe, and hose connections. A reference of these dimensions is listed on page 52.

ADACONN® offers the **ADAFLANGE™ UNIFIED CODE U61 4-Bolt Flange Adapters** for use with the **UNIFIED CODE U61 4-Bolt** Flange Ports. These flange connections with their smaller footprint can be used in place of both the **SAE CODE 61** and **CODE 62 4-Bolt** flange connections. **INSERTA®** offers the **UNIFIED CODE U61 4-Bolt Modular Connectors** for use with the **ADAFLANGE™ UNIFIED CODE U61 4-Bolt Flange Adapters**.

The **ADACONN® + INSERTA® UNIFIED CODE U61 2-Bolt Flange Ports** are recommended for hydraulic flanged tube, pipe, and hose connections. A reference of these dimensions is shown on page 52.

ADACONN® offers the **ADAFLANGE™ UNIFIED CODE U61 2-Bolt Flange Adapters** for use with the **UNIFIED CODE U61 2-Bolt** Flange Ports. These flange connections with the smaller footprint should be used in place of the **CODE 61 4-Bolt** Flange connections. **INSERTA®** offers the **UNIFIED CODE U61 2-Bolt Modular Connectors** for use with the **ADAFLANGE™ UNIFIED CODE U61 2-Bolt Flange Adapters**.

ADACONN®   INSERTA®
Blue Bell, Pa. 19422

**4 & 2-BOLT
FLANGE PORTS &
FLANGE ADAPTERS**

