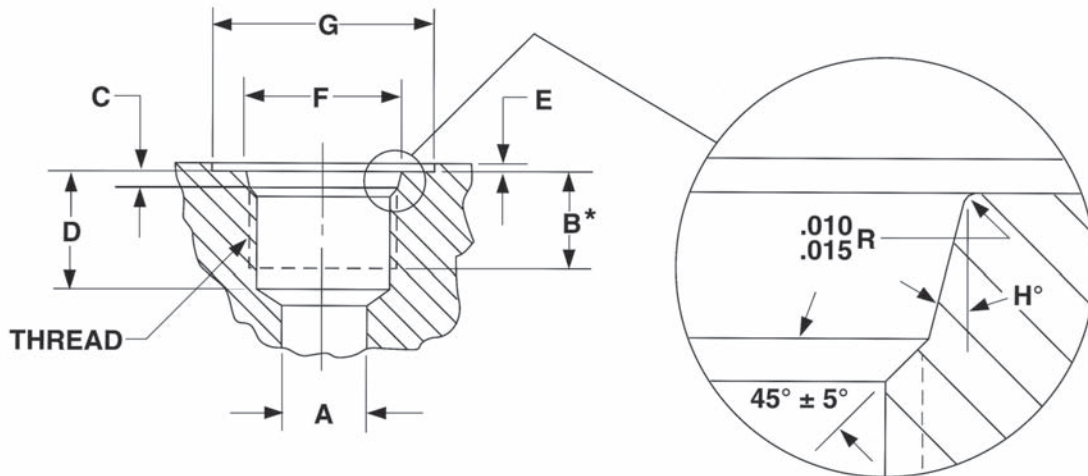


# ADACONN® INSERTA®

## SAE STRAIGHT THREAD PORT DIMENSIONS

SAE information is provided as an aid to designers. For complete specifications refer to SAE Standards J1926 for straight thread ports and J518 JUN93 for 4-Bolt flange ports.



FOR BEST RESULTS USE A FORM TOOL TO MACHINE CAVITY

SIZE CODE	NOMINAL TUBE SIZE	THREAD SIZE	A MIN	B* MIN	C +.015 - .000	D MIN	E MAX	F +.005 - .000	G MIN	H ±1°
- 2	1/8	5/16-24	.062	.390	.074	.468	.062	.358	.672	12
- 3	3/16	3/8-24	.125	.390	.074	.468	.062	.421	.750	12
- 4	1/4	7/16-20	.172	.454	.093	.547	.062	.487	.828	12
- 5	5/16	1/2-20	.234	.454	.093	.547	.062	.550	.906	12
- 6	3/8	9/16-18	.297	.500	.097	.609	.062	.616	.969	12
- 8	1/2	3/4-16	.391	.562	.100	.688	.094	.811	1.188	15
- 10	5/8	7/8-14	.484	.656	.100	.781	.094	.942	1.344	15
- 12	3/4	1 1/16-12	.609	.750	.130	.906	.094	1.148	1.625	15
- 14	7/8	1 3/16-12	.719	.750	.130	.906	.094	1.273	1.765	15
- 16	1	1 5/16-12	.844	.750	.130	.906	.125	1.398	1.910	15
- 20	1 1/4	1 5/8-12	1.078	.750	.132	.906	.125	1.713	2.270	15
- 24	1 1/2	1 7/8-12	1.312	.750	.132	.906	.125	1.962	2.560	15
- 32	2	2 1/2-12	1.781	.750	.132	.906	.125	2.587	3.480	15
- 40 **	2 1/2	3-12	2.344	.750	.132	1.250	.094	3.088	3.875	15
- 48 **	3	3 1/2-12	2.844	.750	.132	1.250	.094	3.588	4.438	15

\*REQUIRES USING A BOTTOM TAP

\*\*NOT AN SAE STANDARD. ADACONN®   INSERTA® STANDARD.

**ADACONN®   INSERTA®**  
Blue Bell, Pa. 19422

**SAE STRAIGHT  
THREAD PORT  
DIMENSIONS**