

Inserta Products, Inc.

CHECK VALVE GUIDED DISC THREAD-IN TYPE

INSERTA® IGT (steel) Check Valves, Guided Disc, may be considered as an alternative to standard Inserta® ICT Thread-In Type valves for more demanding applications.

These valves may be used in conjunction with modified SAE J1926-1 ports in manifolds, sub-plates, flanges, and components.

The guided disc design (patent pending) affords improved longevity in applications prone to significant turbulence, as well as in higher cycling and higher flow applications.

With only minor dimensional differences in length only, The IGT Thread-In type valve may often be directly substituted for the ICT valve, including in the INSERTA® ICFT 4-Bolt Flange Type Valve Assembly.

The valve components are steel. The valve discs and seats are hardened and flat lapped for positive fluid shut off.

The valve disc may be provided with a customer specified orifice to provide fixed orifice flow control function in the checked direction.



Patent Pending

ORDERING INFORMATION

IGT-A-16-N015-R0

INSERTA®
CHECK VALVES
GUIDED DISC
THREAD-IN TYPE

DESIGN CODE

NOMINAL SIZE (Thread Size)

16 = 1 5/16 - 12
20 = 1 5/8 - 12
24 = 1 7/8 - 12
32 = 2 1/2 - 12
40 = 3 - 12
48 = 3 1/2 - 12

FLOW CONTROL OPTION

R = FIXED RESTRICTIVE ORIFICE
0 = DIAMETER (INCH) OF THE FIXED ORIFICE. CUSTOMER MUST SPECIFY THE ORIFICE DIAMETER
SEE "R0" ON DATA SHEET FOR ORIFICE DATA.
(OMIT FOR STANDARD CHECK VALVE)

CRACKING PRESSURE

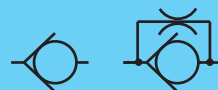
003 = 3 PSI
007 = 7 PSI
015 = 15 PSI (STANDARD)

SEAL COMPOUND

N = BUNA-N (STANDARD)
V = VITON

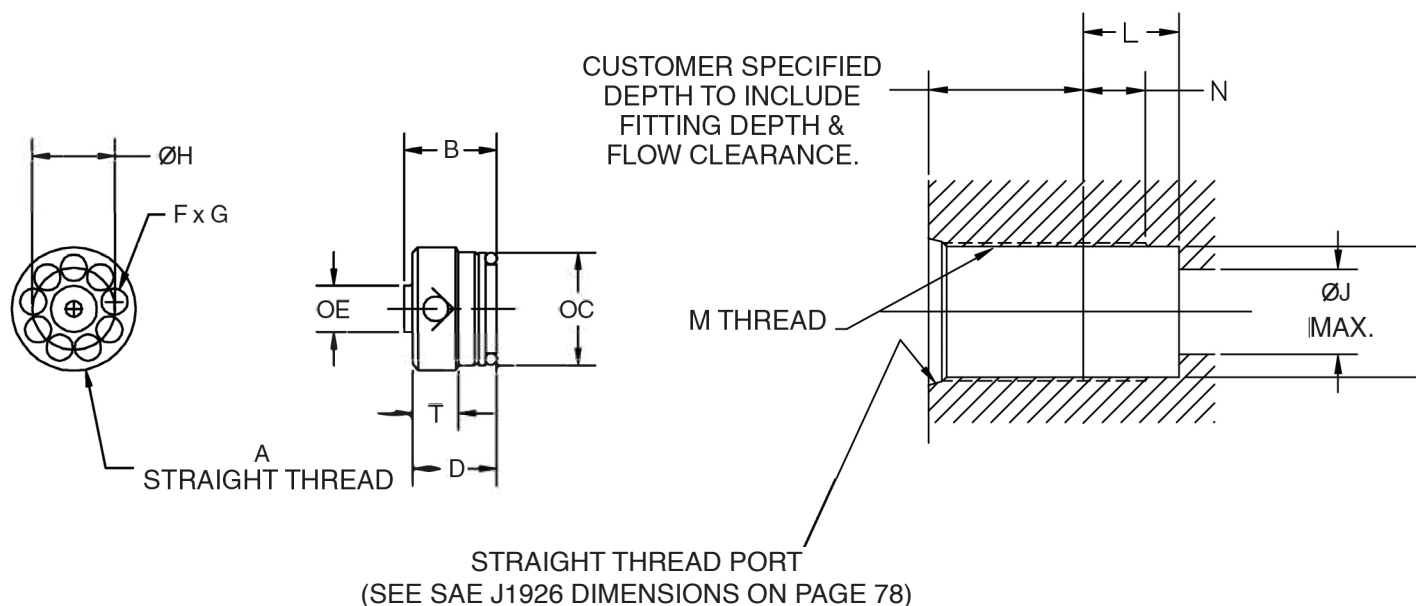
Inserta Products, Inc.
Blue Bell, Pa. 19422

CHECK VALVES
GUIDED DISC
SLIP-IN TYPE



VALVE SIZE	NOMINAL FLOW (GPM)	VALVE DIMENSIONS								RØ MAX	T	O-RING SIZE NO. (mm)	INSTALLATION TOOL	SEATING TORQUE LB-FT
		A	B	C	D	E	F	G	H					
16	35	1 5/16-12	1.024	1.210	.898	0.495	9	.28	.875	0.177	.510	213	IMT-D-16	27-29
20	63	1 5/8-12	1.420	1.535	1.420	--	10	.31	1.161	0.247	.940	219	IMT-E-20	45-50
24	80	1 7/8-12	1.655	1.769	1.655	--	10	.37	1.340	0.283	1.055	222	IMT-E-24	80-90
32	135	2 1/2-12	2.520	2.391	2.520	--	10	.50	1.804	0.368	1.750	227	IMT-E-32	90-100
40	155	3-12	2.988	2.883	2.988	--	10	.59	2.187	0.417	1.750	231	IMT-E-40	300-340
48	175	3 1/2-12	3.113	3.385	3.385	--	10	.69	2.562	0.394	1.750	235	IMT-E-48	400-430

In applications where the valve is subject to sudden shock opening or closing (e.g. Accumulator System) the nominal rated flow must not be exceeded and a minimum cracking pressure of 15 PSI is required.



SEE PAGE 72 FOR
INSTALLATION TOOL
ORDERING INFORMATION

VALVE SIZE	MACHINED CAVITY DIMENSIONS				
	J	K -.005	L	M	N
16	.813	1.228	1.024	1 5/16-12	0.904
20	1.031	1.541	1.420	1 5/8-12	1.025
24	1.250	1.798	1.655	1 7/8-12	1.420
32	1.750	2.416	1.520	2 1/2-12	1.750
40	2.062	2.915	2.988	3-12	1.875
48	2.500	3.415	3.113	3 1/2-12	1.875

MOUNTING POSITION:
OPTIONAL
MAXIMUM OPERATING PRESSURE:
6000 PSI (Contact the Factory for
Pressures up to 7250 PSI)
TEMPERATURE RANGE:
-40°F (-40°C) To 200°F (93°C)
(Depending on seal material)

OPERATING MEDIUM:
HYDRAULIC FLUID
VISCOSITY RANGE:
50 SSU TO 2000 SSU
CRACKING PRESSURE:
3 PSI, 7 PSI, 15 PSI (STANDARD)

Inserta Products, Inc.
Blue Bell, Pa. 19422

CHECK VALVES
GUIDED DISC
SLIP-IN TYPE

