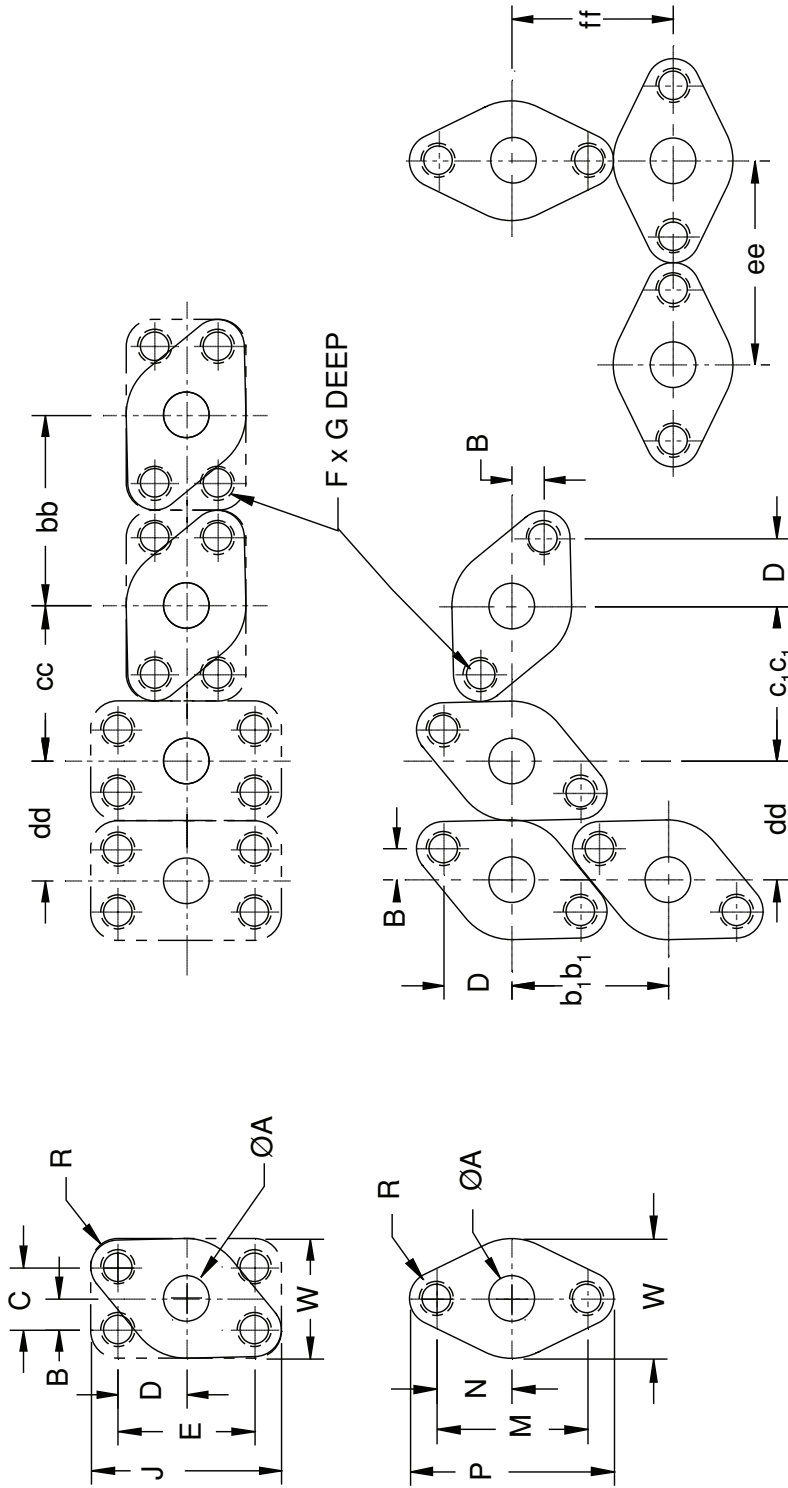


# UNIFIED CODE U61 4 & 2 BOLT FLANGE PORT DIMENSIONS



## UNIFIED CODE U61 PORT DIMENSIONS

SIZE CODE	MAX 4-BOLT	PRESS 2-BOLT	A DIA. ±.0006	B ±.005	B ±.010	C ±.010	D ±.010	D ±.005	D ±.010	E ±.010	F UNC-2B	G MIN	J MIN	M ±.01	N ±.01	P MIN	R MIN	W MIN	bb MIN	b.b. MIN	cc MIN	c.c. MIN	dd MIN	ee MIN	ff MIN
02	12,000	10,000	.13	.139	---	.278	.348	.348	---	.696	8-32	.38	1.00	.75	.38	1.07	.16	.62	1.00	.89	.81	.81	.62	1.07	.84
04	11,000	8,000	.25	.173	---	.346	.402	.402	---	.804	10-24	.44	1.25	.88	.44	1.26	.19	.75	1.25	1.03	1.00	.96	.75	1.26	1.00
06	8,500	6,000	.38	.215	---	.430	.519	.519	---	1.038	1/4-20	.56	1.50	1.12	.56	1.54	.20	.87	1.50	1.22	1.18	1.16	.87	1.54	1.20
08	6,000	5,000	.50	---	.344	.688	---	---	.750	1.500	5/16-18	.69	2.12	1.65	.82	2.25	.29	1.31	2.12	1.72	1.71	1.70	1.31	2.25	1.78
12	6,000	5,000	.75	---	.438	.875	---	---	.938	1.875	3/8-16	.81	2.56	2.07	1.03	2.72	.32	1.62	2.56	2.04	2.09	2.06	1.62	2.72	2.17
16	6,000	4,000	1.00	---	.515	1.031	---	---	1.031	2.062	3/8-16	.81	2.75	2.30	1.15	3.05	.37	1.87	2.75	2.33	2.31	2.35	1.87	3.05	2.46
20	6,000	4,000	1.25	---	.594	1.188	---	---	1.156	2.312	7/16-14	.94	3.12	2.60	1.30	3.36	.37	2.12	3.12	2.48	2.62	2.55	2.12	3.36	2.74
24	6,000	3,000	1.50	---	.703	1.406	---	---	1.375	2.750	1/2-13	1.06	3.69	3.09	1.54	3.97	.44	2.50	3.69	2.93	3.09	3.02	2.50	3.97	3.23
32	6,000	3,000	2.00	---	.844	1.688	---	---	1.531	3.062	1/2-13	1.06	4.00	3.49	1.74	4.38	.44	3.00	4.00	3.28	3.50	3.37	3.00	4.38	3.69

NOTE: 1. THE ABOVE BOLT THREAD DEPTH IS BASED ON A MATERIAL YIELD STRESS OF 47,000 PSI MIN.

2. THESE FLANGE PORTS USE SOCKET HEAD CAP SCREWS FOR FASTENING.

3. THE 'CC' DIMENSION FOR SIZE 16 MUST BE INCREASED FROM 2.312 TO 2.328 IF A 2 BOLT ADAPTER IS PLACED ADJACENT TO A 4-BOLT ADAPTER AT 90°.