

Inserta Products, Inc.

DUPLEX FILTRATION ASSEMBLIES

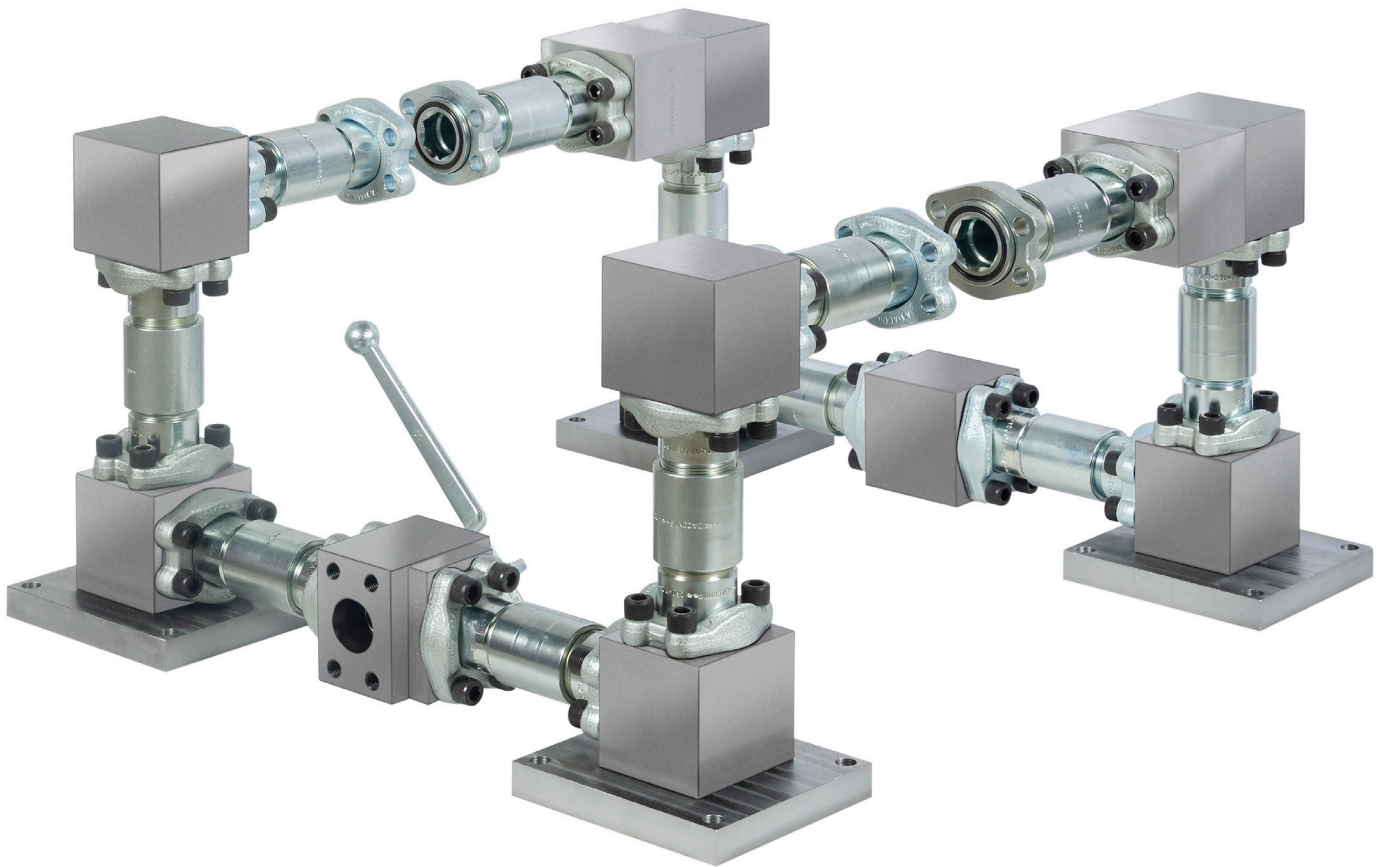
INSERTA® Duplex Filtration Assemblies, Flange Type, allow alternate operation of parallel filters. When one filter needs to be replaced or serviced, the inlet diverter valve is used to select the opposite filter for continuous operation. The assemblies are provided in inlet and outlet sets.

The inlet assembly is provided with a selector valve, while the outlet assembly is provided with check valves to prevent back flow through the unselected filter. The captive flanges on both the inlet and outlet assemblies may be rotated to accommodate both vertically and horizontally oriented filter flange patterns. Different size, or even different SAE Code flanges may be provided for filter connections so long as the maximum working pressure of the nominal size assembly is not exceeded.

The assemblies may be configured for either bottom or top filter head geometries. Assembly mounting plates are standard. Filters must be supported separately.

Both the inlet and outlet assemblies provide three degrees of axial and rotational freedom to accommodate manufacturing tolerances in the filter flange pattern locations and mounting planes.

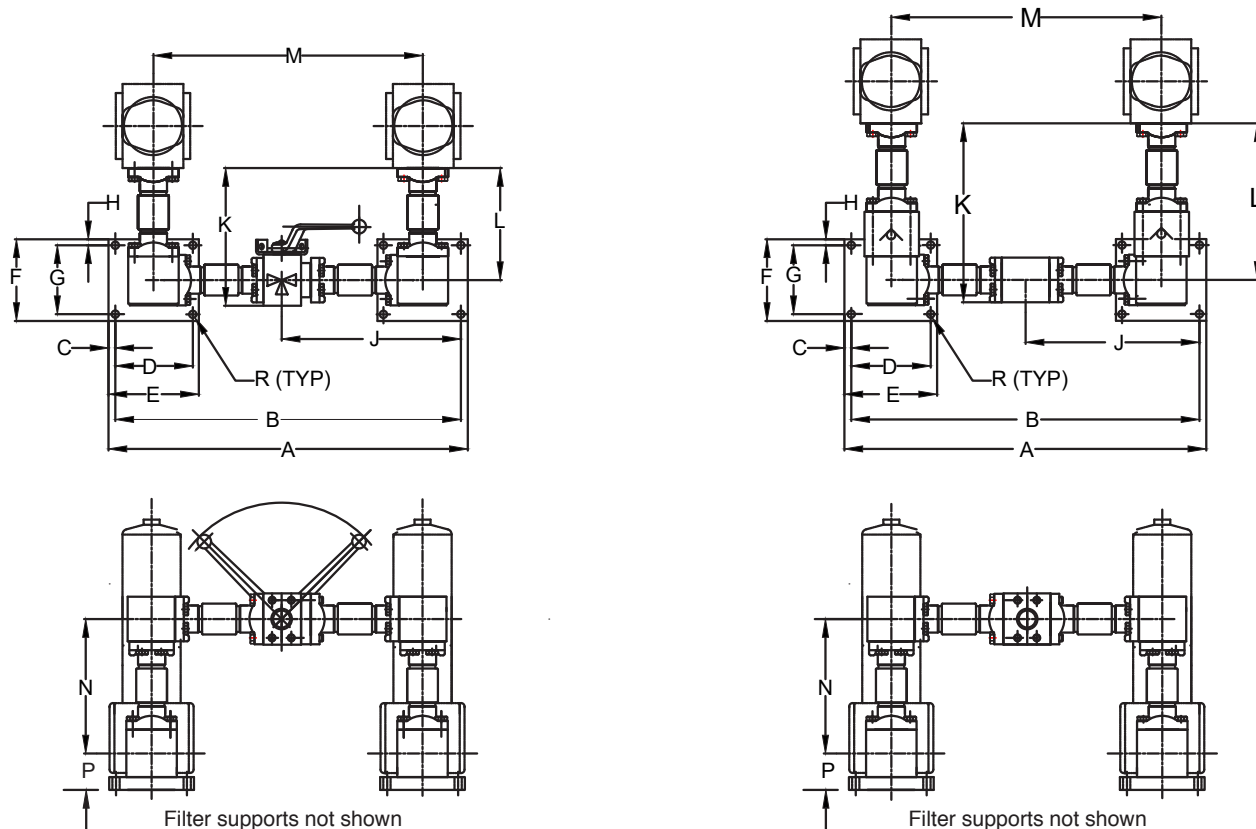
The INSERTA® Duplex Filtration Assemblies are of steel construction.



Inserta Products, Inc.
Blue Bell, Pa. 19422

DUPLEX
FILTRATION
ASSEMBLY

DUPLEX FILTRATION ASSEMBLY – GEOMETRY TOP



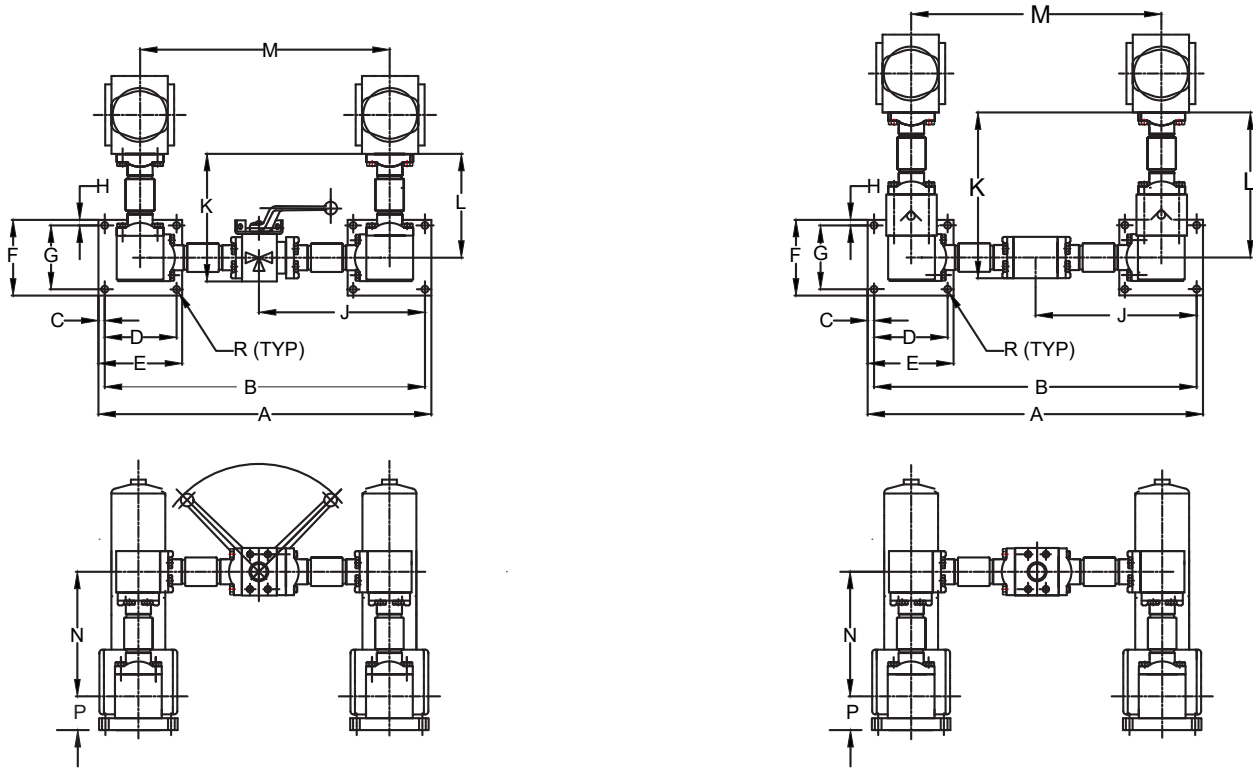
Code 61

ASSEMBLY SYSTEM	NOMINAL SIZE	A ±.02	B ±.02	C ±.01	D ±.01	E ±.01	F ±.01	G ±.01
INLET	1 1/2	26.25	25.25	.50	5.60	6.60	5.97	5.03
OUTLET	1 1/2	26.25	25.25	.50	5.60	6.60	5.97	5.03
INLET	2	28.71	27.71	.50	6.50	7.50	5.97	5.00
OUTLET	2	28.71	27.71	.50	6.50	7.50	5.97	5.00
INLET	2 1/2	32.00	31.00	.50	7.50	8.50	6.40	5.50
OUTLET	2 1/2	32.00	31.00	.50	7.50	8.50	6.40	5.50

ASSEMBLY SYSTEM	NOMINAL SIZE	H ±.01	J ±.03	K ±.03	L ±.03	M ±.03	N ±.03	P ±.02	R.DIA.
INLET	1 1/2	0.44	13.02	9.98	8.10	19.65	9.92	2.66	0.53
OUTLET	1 1/2	0.44	12.62	12.98	11.35	19.65	9.92	2.66	0.53
INLET	2	0.49	14.10	11.10	9.00	21.92	10.96	2.92	0.53
OUTLET	2	0.49	13.85	14.10	12.11	21.92	10.96	2.92	0.53
INLET	2 1/2	0.45	15.79	13.52	10.14	24.76	12.38	3.17	0.53
OUTLET	2 1/2	0.45	15.50	16.26	14.02	24.76	12.38	3.17	0.53

Inserta Products, Inc. Blue Bell, Pa. 19422	DUPLEX FILTRATION ASSEMBLY	
---	---	--

DUPLEX FILTRATION ASSEMBLY – GEOMETRY BOTTOM



Filter supports not shown

Filter supports not shown

Code 61

ASSEMBLY SYSTEM	NOMINAL SIZE	A ±.02	B ±.02	C ±.01	D ±.01	E ±.01	F ±.01	G ±.01
INLET	1 1/2	26.25	25.25	.50	5.60	6.60	5.97	5.03
OUTLET	1 1/2	26.25	25.25	.50	5.60	6.60	5.97	5.03
INLET	2	28.71	27.71	.50	6.50	7.50	5.97	5.00
OUTLET	2	28.71	27.71	.50	6.50	7.50	5.97	5.00
INLET	2 1/2	32.00	31.00	.50	7.50	8.50	6.40	5.50
OUTLET	2 1/2	32.00	31.00	.50	7.50	8.50	6.40	5.50

ASSEMBLY SYSTEM	NOMINAL SIZE	H ±.01	J ±.03	K ±.03	L ±.03	M ±.03	N ±.03	P ±.02	R.DIA.
INLET	1 1/2	0.44	13.02	9.98	8.10	19.65	9.92	2.66	0.53
OUTLET	1 1/2	0.44	12.62	12.98	11.35	19.65	9.92	2.66	0.53
INLET	2	0.49	14.10	11.10	9.00	21.92	10.96	2.92	0.53
OUTLET	2	0.49	13.85	14.10	12.11	21.92	10.96	2.92	0.53
INLET	2 1/2	0.45	15.79	13.52	10.14	24.76	12.38	3.17	0.53
OUTLET	2 1/2	0.45	15.50	16.26	14.02	24.76	12.38	3.17	0.53

Inserta Products, Inc.
Blue Bell, Pa. 19422

**DUPLEX
FILTRATION
ASSEMBLY**

ORDERING INFORMATION

IDFA - A - 61 24 - F24(C61) - N - D - L - 003 - S - 1 - T

**INSERTA®
DUPLEX FILTER
ASSEMBLY**

DESIGN CODE

NOMINAL ASSEMBLY SIZE

61** = SAE J518-1 : CODE 61
 **24 = 1 1/2
 **32 = 2
 **40 = 2 1/2

**CLAMP FLANGE CONNECTION,
FILTER INLET/OUTLET, SIZE & SAE CODE***

F24(C6*) = 1 1/2
 F32(C6*) = 2
 F40(C6*) = 2 1/2
 F48(C6*) = 3

SEAL COMPOUND

N = BUNA-N (STANDARD)
 V = VITON

GEOMETRY

T = TOP
 B = BOTTOM

**SURFACE
TREATMENT**

1 = CHROMIUM-3 ZINC

BODY MATERIAL

S = STEEL

**CHECK VALVE
CRACKING PRESSURE**

003 = 3 PSI
 007 = 7 PSI
 015 = 15 PSI

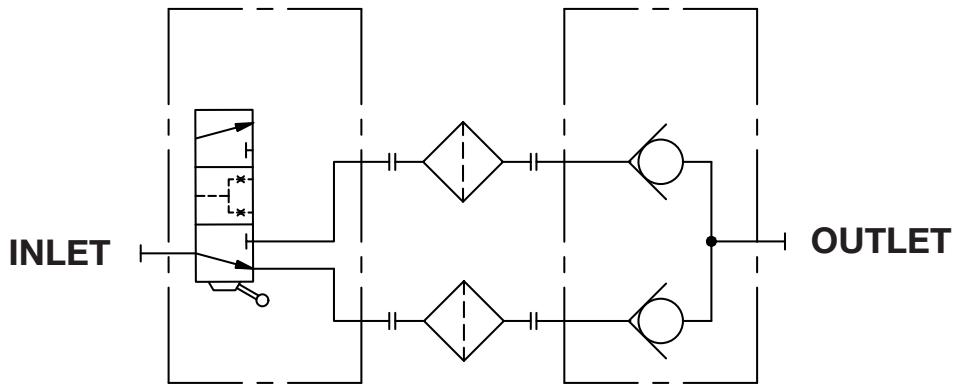
STOP PLATE OPTION

L = LOCKABLE STOP PLATE

BALL VALVE SEAT MATERIAL

D = DELRIN

*Clamp Flange Connection, Filter Inlet/Outlet, must be the same size or larger than the Nominal Assembly Size



**FILTERS SUPPLIED
BY CUSTOMER**

**Inserta Products, Inc.
Blue Bell, Pa. 19422**

**DUPLEX
FILTRATION
ASSEMBLY**