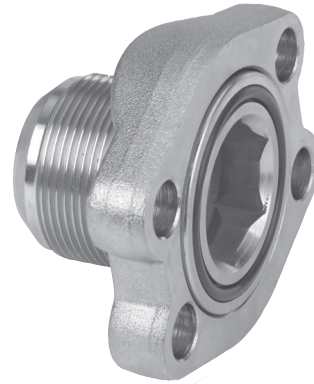
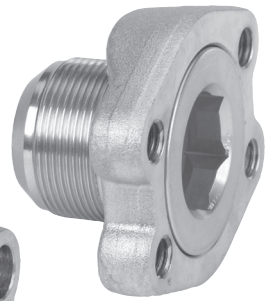




# ADACONN®



## ADAFLANGE™ SOCKET HEAD FLANGE ADAPTERS

The **ADAFLANGE™ SOCKET HEAD FLANGE ADAPTER (AF0)**, with its face seal, is generally supplied with the clamp type (thru-hole) flange (AS1). This combination adapts a flange port to a threaded connection using a minimum of space and joints.

## ADAFLANGEPORT™ SOCKET HEAD FLANGE ADAPTERS

The **ADAFLANGEPORT™ SOCKET HEAD FLANGE ADAPTER (AFP)**, with its plain face, is generally supplied with the threaded type companion flange (BS1). This combination adapts a threaded connection to a flange connection using a minimum of space and joints.

Both the **ADAFLANGE™** and the **ADAFLANGEPORT™ SOCKET HEAD FLANGE ADAPTERS** can be supplied with either the clamp type or threaded type companion flanges, thereby giving you the greatest amount of flexibility in saving space and reducing joints.

Use of the **ADAFLANGE™** and **ADAFLANGEPORT™ SOCKET HEAD FLANGE ADAPTERS** together makes a great union.

## ORDERING INFORMATION

**AFO - K 12 - S 12 - 1.75 - S 1 - B - A S 1**

### ADAPTER TYPE

AFO = ADAFLANGE™  
AFP = ADAFLANGEPORT™

### FLANGE HEAD DESIGN

K = SAE - J518 (CODE 61)  
R = SAE - J518 (CODE 62)

### FLANGE HEAD SIZE

08 = 1/2      24 = 1-1/2  
12 = 3/4      32 = 2  
16 = 1      40 = 2-1/2  
20 = 1-1/4      48 = 3

### MALE THREAD TYPE

F = 37° FLARE  
S = SAE STRAIGHT O-RING STUD ENDS  
P = PORT PLUG (NO THREAD EXTENSION)  
O = O-RING FACE SEAL  
L = TYPE SCHEDULE 40 - ANSI B1.20.3 NPTF  
T = TYPE SCHEDULE 160 - ANSI B1.20.3 NPTF  
X = TYPE XXS - ANSI B1.20.3 NPTF

### MALE THREAD SIZE¹

F & S TYPE	L,T,X TYPE	O TYPE	F & S TYPE	L,T,X TYPE	O TYPE
08 = 3/4-16	1/2-14	3/4-16	20 = 1 5/8-12	1 1/4-11 1/2	1 5/8-12
10 = 7/8-14			24 = 1 7/8-12	1 1/2-11 1/2	1 7/8-12
12 = 1 1/16-12	3/4-14	1 1/16-12	32 = 2 1/2-12	2-11 1/2	2 1/2-12
14 = 1 3/16-12			40 = 3-12	2 1/2-8	
16 = 1 5/16-12	1-11 1/2	1 5/16-12	48 = 3 1/2-12	3-8	

### FLANGE FINISH

0 = PLAIN (NO FINISH) - STANDARD ON DUCTILE AND MALLEABLE IRON FLANGES  
1 = ZINC CHROMATE - STANDARD ON STEEL FRAMES

### FLANGE MATERIAL

D = DUCTILE IRON OR MALLEABLE IRON  
S = STEEL

### FLANGE TYPE

A = SAE - ONE-PIECE CLAMP TYPE  
B = SAE - ONE-PIECE THREADED COMPANION TYPE

### SEAL MATERIAL

(OMIT ON AFP WITH F or T THREAD)  
B = BUNA N  
V = VITON

### ADAPTER FINISH

1 = ZINC CHROMATE  
Ø = UNPLATED

### ADAPTER MATERIAL

S = STEEL

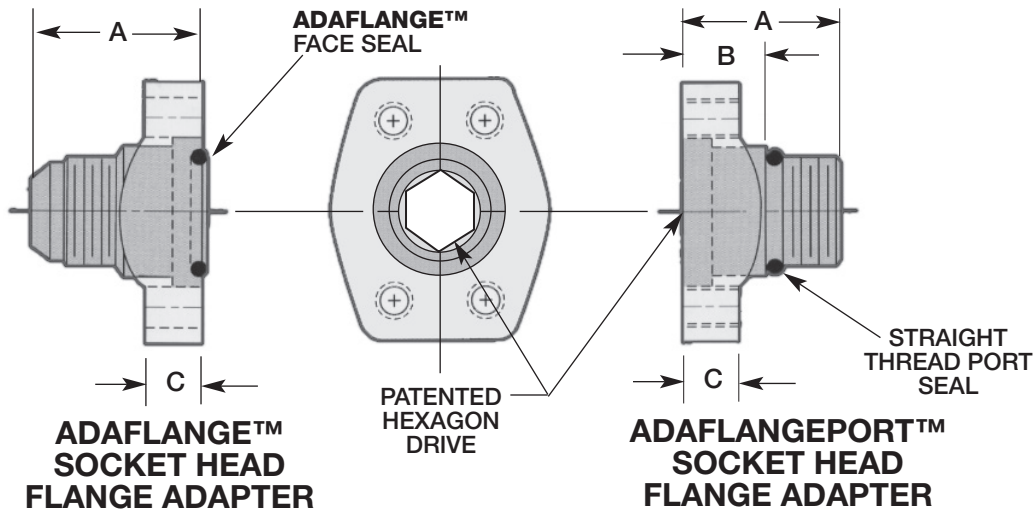
### ADAPTER LENGTH

1.75 = THE ACTUAL "A" LENGTH IN INCHES  
(OMIT FOR P TYPE)

¹Male Thread Size Can Not Normally Exceed Flange Head Size with the One-Piece SAE Flange. The Exceptions are the Flange Head Size 08 and 12 may have the F10 and F14 size respectively.

**ADACONN®**  
Blue Bell, Pa. 19422

**ADAFLANGE™**  
**ADAFLANGEPORT™**  
CODE 61 & 62  
**SOCKET HEAD ADAPTERS**



**SEE PAGE 64  
FOR WRENCH TOOL  
INFORMATION**

**ADAFLANGE™ and ADAFLANGEPORT™ SOCKET HEAD FLANGE ADAPTERS** are available with 37° Flare, NPTF threads or SAE straight thread O-Ring stud ends. ISO “M” thread O-Ring stud ends, ORS, O-Ring face seal and British threads are also available.

**ADAFLANGE™ and ADAFLANGEPORT™ SOCKET HEAD FLANGE ADAPTERS** have hexagon drives in the head end to allow for center drive wrenching.

**SAE CODE 61 FLANGE HEAD - DESIGN K**

FLANGE HEAD SIZE	STANDARD COMPACT LENGTH		STANDARD EXTENDED LENGTH		C	HEXAGON BOLT KIT (includes 4 hex bolts with lockwashers)	HEXAGON DRIVE SIZE	BIT or WRENCH NO.	O-RING SIZE NO.	
	A	B	A	B					FACE <sup>2</sup>	PORT <sup>1</sup>
6108	1.50	.94	2.25	1.69	.50	ABK-B4031-18x1.25/1.00*	7/16	AHB-A-7/16	210	908
6112	1.75	1.02	2.38	1.65	.56	ABK-B4038-16x1.25	5/8	AHB-A-5/8	214	912
6116	1.88	1.15	2.50	1.77	.62	ABK-B4038-16x1.25	7/8	AHB-A-7/8	219	916
6120	2.00	1.27	2.88	2.15	.62	ABK-B4044-14x1.50/1.25*	1-1/16	AHW-A-1-1/16	222	920
6124	2.13	1.40	3.00	2.27	.62	ABK-B4050-13x1.50	1-5/16	AHW-A-1-5/16	225	924
6132	2.38	1.65	3.25	2.52	.62	ABK-B4050-13x1.50	1-3/4	AHW-A-1-3/4	228	932
6140	2.75	—	3.75	—	.75	ABK-B4050-13x1.50	2-3/16	AHW-A-2-3/16	232	—
6148	3.00	—	4.00	—	.88	ABK-B4063-11x1.75/2.00*	2-5/8	AHW-A-2-5/8	237	—

**SAE CODE 62 FLANGE HEAD - DESIGN R**

FLANGE HEAD SIZE	STANDARD COMPACT LENGTH		STANDARD EXTENDED LENGTH		C	HEXAGON BOLT KIT (includes 4 hex bolts with lockwashers)	HEXAGON DRIVE SIZE	BIT or WRENCH NO.	O-RING SIZE NO.	
	A	B	A	B					FACE <sup>2</sup>	PORT <sup>1</sup>
6208	1.63	1.07	2.25	1.69	.62	ABK-B4031-18x1.25	7/16	AHB-A-7/16	210	908
6212	2.00	1.27	2.75	2.02	.75	ABK-B4038-16x1.50	5/8	AHB-A-5/8	214	912
6216	2.25	1.52	3.13	2.40	.94	ABK-B4044-14x1.75	7/8	AHB-A-7/8	219	916
6220	2.50	1.77	3.25	2.52	1.06	ABK-B4050-13x1.75/2.00*	1-1/16	AHW-A-1-1/16	222	920
6224	2.75	2.02	3.75	3.02	1.19	ABK-B4063-11x2.25	1-5/16	AHW-A-1-5/16	225	924
6232	3.38	2.65	4.63	3.90	1.44	ABK-B4075-10x2.75	1-3/4	AHW-A-1-3/4	228	932
*6240	3.50	—	4.50	—	1.81	ABK-B4088-9x3.25	2-3/16	AHW-A-2-3/16	232	—
*6248	3.75	—	4.75	—	2.19	ABK-B4112-7x4.00	2-5/8	AHW-A-2-5/8	237	—

1. For Male Thread Type S Only  
2. **ADAFLANGE™** Adapters have this seal

\*NOT AN SAE STANDARD—PROVIDES BOLT ENGAGEMENT OF 1 1/2 TIMES NOMINAL BOLT DIAMETER FOR FASTENING TO **INSERTA™** STEEL MODULAR CONNECTORS.

<b>ADACONN®</b> Blue Bell, Pa. 19422	<b>ADAFLANGE™</b> <b>ADAFLANGEPORT™</b> CODE 61 & 62 SOCKET HEAD ADAPTERS
---	--

**ADAPTERS & CONNECTORS**